

# FREE YOUR ROBOT

FLEXX REFERENCE | BEACON | CONNECT

**Flexxbotics**

1 (877) 456 1576 | 711 Atlantic Wharf, Boston, MA | [www.flexxbotics.com](http://www.flexxbotics.com)

WATCH DEMO VIDEO



UNIVERSAL ROBOTS+  
Certified

# FLEXX CONNECT

Flexx Beacon + Flexx Reference



REDEPLOY ROBOT  
ON MULTIPLE JOBS



INCREASE ROBOT  
UTILIZATION



EASY TO REDEPLOY.  
NO ENGINEER NEEDED  
TO MOVE ROBOTS



WIRELESSLY  
AUTOLOAD CORRECT  
PROGRAM



LOCK YOUR ROBOT W/  
6 DEGREE OFFSET



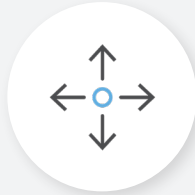
**Flexx**botics

# THE FLEXX REFERENCE

Makes any UR flexible with a 6 Degree Lockout



REDEPLOY ROBOT  
ON MULTIPLE JOBS

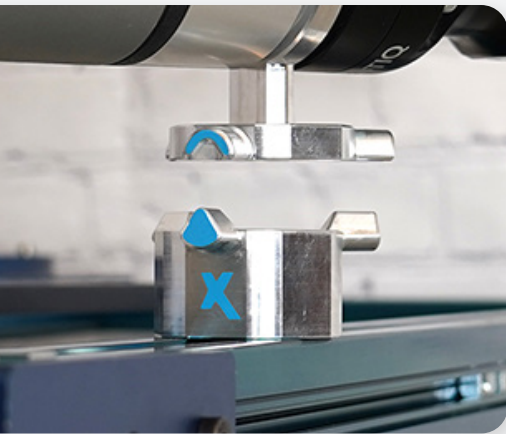


TOUCH OFF TOOL  
FOR MAINTENANCE



EVALUATE PROTOTYPE  
ROBOT APPS

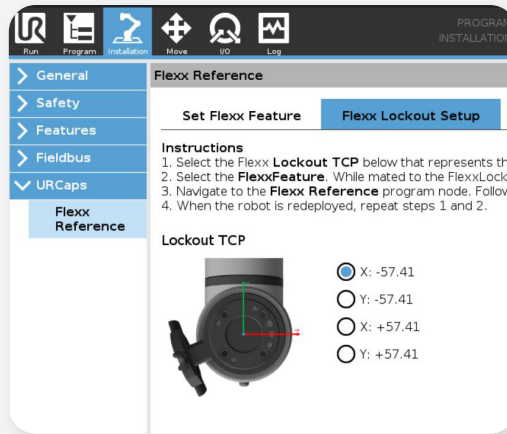
Lock It



1

SET FLEXX REF VIA  
FREE DRIVE INTO  
LOCKOUT

Save It



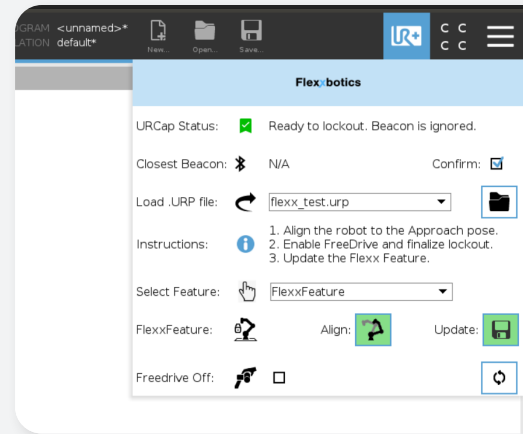
2

CAPTURE  
COORDINATES VIA  
UR CAP PLUGIN

3

MOVE PREVIOUSLY  
SAVED PROGRAM AND  
UNDER FLEXXFEATURE.

Run It



4

FLEXXFEATURE  
REALIGNS ROBOT  
TO STATION

5

NOW FREE TO MOVE  
BETWEEN JOBS, PERFORM  
MAINTENANCE, OR TOUCH OFF  
AFTER BUMP/VIBRATION

ACCURACY	±1MM, ±.5MM (HIGH PRECISION MODEL)
LOCKING TIME	1-2 MINUTES
MATERIAL	ALUMINUM
ROBOT COMPATIBILITY	UR E-SERIES ROBOTS
END EFFECTOR COMPATIBILITY	ALL UR+ END EFFECTORS AND OTHERS
LEAD TIME	1 WEEK

**Flexx**botics



# THE FLEXX BEACON

Adds Connectivity and Autonomous Process to Mobility



USES BEACON TECHNOLOGY TO LOCATE AND CONNECT THE ROBOT TO SURROUNDINGS



PROVIDES POSITIONAL AWARENESS, ALLOWING EFFICIENT MOBILITY

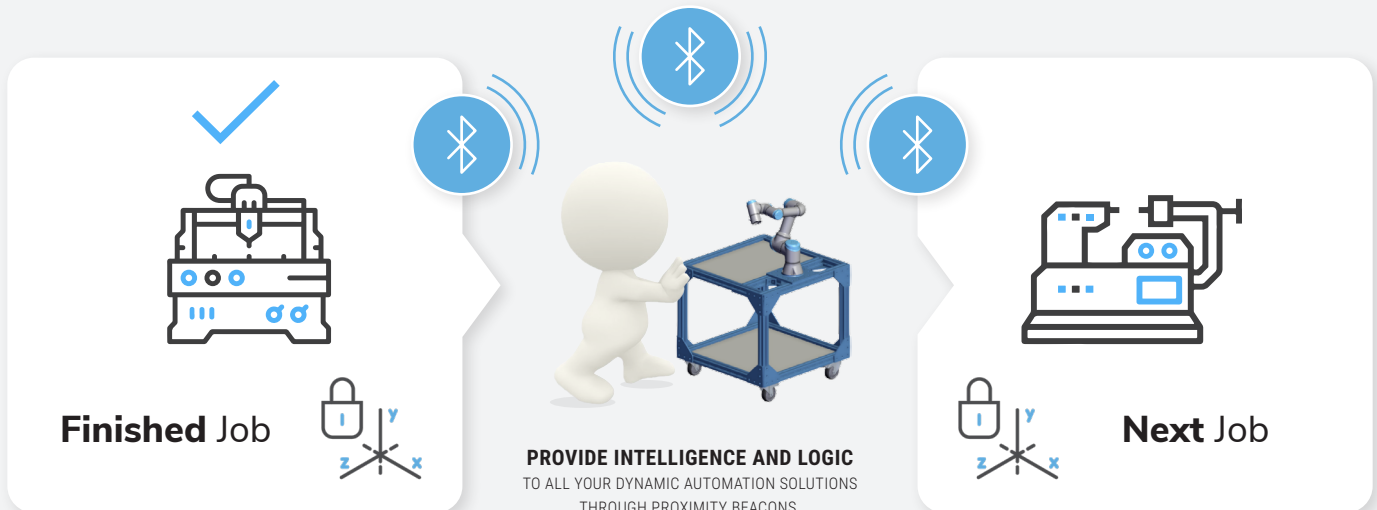


PROVIDES INTELLIGENCE LAYER TO LOAD CORRECT PART AND PROGRAM



EASY REDEPLOYMENT WITH OPERATOR. ADDING RELIABLE PROCESS TO MOBILITY

Beacon Technology



SCANNING RANGE	UP TO 4 FT
COMMUNICATION	BLE 5.0
IP RATING	67
POWER	BATTERY (LITHIUM 3V)
BEACON SPACING	3 - 100 FT
LEAD TIME	1 WEEK



**Flexxbotics**